

*Make The Leap Towards*  
**THE PERFECT HOME**

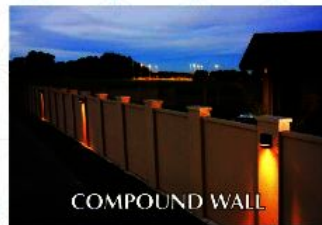


**ANANTHA**  
**BANJARA**  
**HILLS**  
CUSTOMISED LUXURY HOMES  
Residential Layout @ KURNOOL





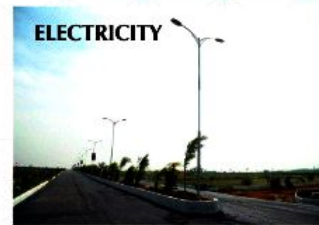
ENTRANCE ARCH



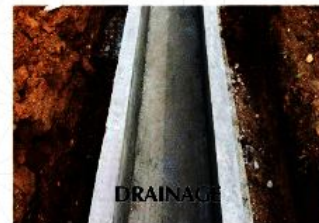
COMPOUND WALL



NAME BOARD FOR EACH PLOT



ELECTRICITY



DRAINAGE



WIDE BIT ROADS



ANANTHA  
**BANJARA**  
 HILLS  
 CUSTOMISED LUXURY HOMES

Residential Layout @ KURNOOL

MOVE IN FOR AN  
*Extra Ordinary Lifestyle*

Nothing compares the love and caress of mother. Nothing matches Mother Nature's life-giving and life-sustaining provisions. ANANTHA BANJARA HILLS invites you home to the unmixed love and healing caress of Mother Nature.



## SPECIFICATIONS



### Structure

The building shall be RCC framed super structure

### Superstructure

Outside walls will be 9" thick, inside walls will be 4" with Red Clay bricks in cement mortar.



### Plastering

Ceiling plastering CM(1:4), wall plastering Double Coat (Internal & external CM(1.5))



### Doors & Windows

**MainDoor** : The Best quality teak wood frame with teak wood shutter and design panel, melamine mall polish and good quality hardware of brass with security lock.



**Internal doors** : The best quality teak wood frame with flush shutter and good quality hardware.

**Windows** :UPVC Windows with safety grills, glass and standard fittings.



### Flooring

Best Quality 2'x2' Verified tiles in Hall, dining, bedrooms, and Kitchen and Marbles in corridors and staircase. & 1'x1' Parking tiles in parking Floor.



### Electrical

Concealed Fine cab / copper wiring of suitable gauge with adequate light and power points Including AC points. Provision for sockets for Telephone, Cable TV, refrigerator, mixer, geyser with Standard Switches.



### Painting

**Internal** : Two coats luppum & two coats of plastic emulsion over a base coat of primer in all rooms excluding balcony.

**External** : Cement based weather proof paint & premium quality texture painting with wallcare, wherever required.



### Tile Cladding & dadoing

**Toilets** : Best quality acid resistant & anti-skid good body designer glazed ceramic tiles dado upto 6 1/2' height

**Kitchen** : Glazed ceramic tile dado upto 2 1/2' height above kitchen platform.



### Telephone & Cable TV

- a) Provision for master bedroom and living room
- b) One internal point for each flat.



### Water Supply

CPVC pipes for hot water for Internal hot water, cold water UPVC pipes (Sudhakar)



### Toilet

- a) One toilet with IWC and another EWC with CERA make standard fittings.
- b) Two wash Basin of best quality make



### Kitchen

Granite platform with SS Sink with bore & municipal water connection. Provision for exhaust fan and cabinets.

### NOTE :

Registration charges, Labour Cess & GST to be paid by the purchaser. Electricity Connection charges are at extra cost.

## BRANDS WE USE IN CONSTRUCTIONS



### NOTE

• Brand and make are indicative and will be of equivalent make & quality as per availability Furniture layout shown in the brochure is indicative of how the unit can be used. No furniture, landscape or accessories shown in the visuals are provided with the villa • All floor plans and specifications are indicative and are subject to change as decided by the Company or competent authority. Marginal revisions may be necessary during construction.

